



**FORCE & TORQUE MEASUREMENT**  
ISO 9001 & ISO/IEC 17025 ACCREDITED

**IMADA®, Inc.**

3100 Dundee Rd., Suite 707, Northbrook, IL 60062  
Tel: 847-562-0834 Fax: 847-562-0839  
www.imada.com E-mail: imada@imada.com

# Torque Tester for Non-Impact Power Drivers & Manual Wrenches

## Series i

- Wide measuring range up to 69.7 lbf-in
- lbf-in, Kgf-cm and N-cm (selectable)
- Programmable high/Low setpoints with LED indicator and audible beep.
- 2 - driver adapters included: i-8 & i-80 come with Smart Adapters
- Peak, Real Time and Peak Down measuring modes (selectable)
- Measure both clockwise and counterclockwise
- USB virtual COM port sends peak (1 data) or continuous data (12 or 180 data/second)
- Statistics: number of data, Max, Min, Avg
- Heavy-duty metal construction
- Runs on internal NiCad batteries or AC adapter
- 3/8" drive for manual torque wrenches

Series i digital torque testers are ideal for calibrating power screwdrivers with torque controlled clutches. They can be used for static torque testers as well. They feature selectable modes; peak, real time, and peak down mode to capture the critical first peak value. Also featured are; programmable setpoints, statistics, USB data output and standard 3/8" drive. All digital torque testers are sold in kit form complete with tester, hard carrying case, 2 driver adapters and AC charger/adapter. *Do not use with impact or air tools* (Ask for DI-1M impact wrench torque tester).



Series i



**Smart Adapters** simulate screw tightening, eliminating the need to back out the screw and are included with i-8 & i-80.

### Series i Ranges Accuracy $\pm 0.5\%$ F.S., $\pm 1$ LSD

Model	Capacity (Resolution)			
	lbf-in	kgf-cm	N-cm	N-m
i-8	0.020-6.970 (0.001)	0.020-8.000 (0.001)	0.20-78.60 (0.01)	—
i-80	0.20-69.70 (0.01)	0.20-80.00 (0.01)	2.0-786.0 (0.1)	0.020-7.860 (1)

### Specifications — Driver Adapters (2 included)

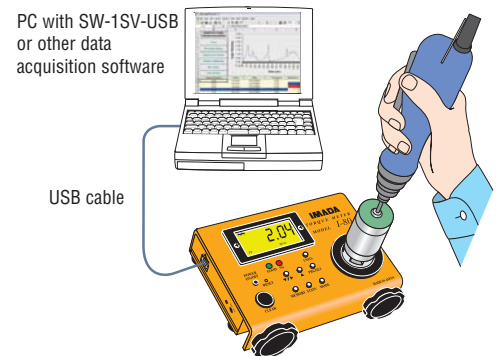
Adapter	Model	Range lbf-in	Top Screw	Operational life	
i-8	Smart	<b>OW-025E</b>	2	6-32	10,000 hrs
		<b>OW-10E</b>	9	6-32	8,000 hrs
i-80	Smart	<b>OW-20E</b>	18	6-32	5,000 hrs
		<b>OW-60E</b>	53	1/4-20	5,000 hrs

Smart Driver Adapters eliminate reversing the power driver and backing off the screw like spring adapters. Plug to socket 3/4" square x 5/32" (20 mm square x 4 mm)

### Specifications — Optional Metric Smart Driver Adapters

Metric Smart Adapter	OW-025	OW-10	OW-20	OW-60
Top Screw	M2P0.4	M3P0.5	M4P0.7	M6P1

Specifications subject to change without notice.



The torque readings displayed on torque testers may vary from the actual torque that a tool applies to a thread joint, because testers cannot always duplicate actual joint characteristics. Verify the torque output of the tool being used on the actual assembly, when critical assemblies are involved.

# Digital Torque Tester

Model: DIS-IP with Remote Sensor

DIS-IPS with Minature Remote Sensor

- Programmable High/Low setpoints with Go/No Go LED indicators and audible beep
- Peak, Real Time and Peak Down measuring modes (selectable)
- Selectable units lbf-in, kgf-cm, N-cm, or lbf-ft, kgf-m, N-m
- USB virtual COM port sends peak (1 data) or continuous (12 or 180 data/sec)
- Statistics: number of data, Max, Min, Avg
- 800 data memory for recall or for SPC download
- Both clockwise and counterclockwise operation
- Heavy duty metal construction
- Runs on internal NiCad batteries (8 hour use)
- AC adapter/charger included



Digital Torque Tester with flanged remote sensor checks the calibration of torque tools up to 362 lbf-ft. Select Peak, Real Time or Peak Down modes. Programmable high/low setpoints enable Go/No Go testing; green lights between high and low setpoints, and red for under low and over high setpoint. Use the 800 internal memory for peak data recall or USB download for analysis by Imada data acquisition software SW-1SV-USB. Calibrate your own torque wrenches and electric drivers. DIS-IPS miniature sensor is ideal for permanent installations. Do not use with power drivers or impact tools (Ask for DI-IM impact wrench torque tester).

**Ranges** Accuracy  $\pm 0.5\%$  F.S.,  $\pm 1$  LSD

Model	Capacity			
DIS-IP	lbf-in	kgf-cm	N-cm	N-m
DIS-IP5	0.20~44.00	0.20~50.00	2.0~500.0	0.020~5.000
DIS-IP50	2.0~440.0	2.0~500.0	20~5000	0.20~50.00
	lbf-in	lbf-ft	kgf-m	N-m
DIS-IP200	20~1740	2.0~145.0	0.20~20.00	2.0~200.0
DIS-IP500	20~4400	2.0~362.0	0.20~50.00	2.0~500.0

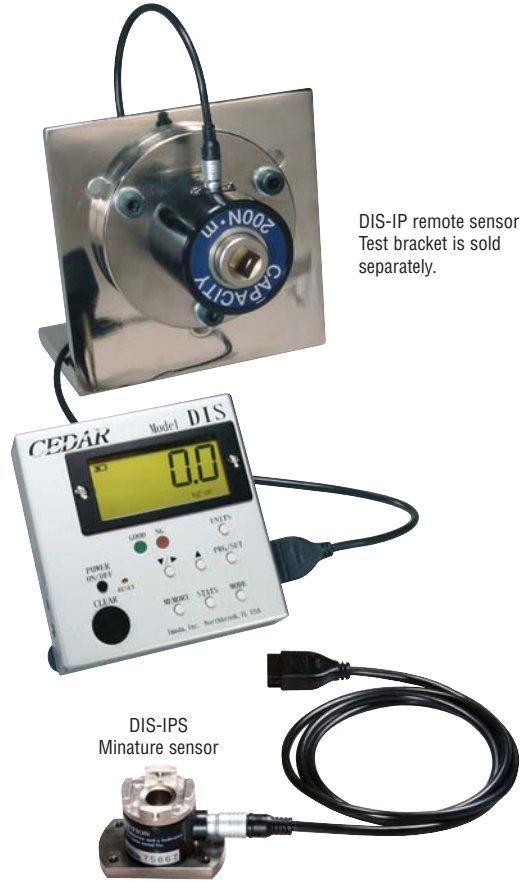
DIS-IPS	lbf-in	kgf-cm	N-cm	N-m
DIS-IPS05C	0.020~4.500	0.020~5.000	0.20~50.00	—
DIS-IPS5C	0.20~45.00	0.20~50.00	—	0.020~5.000
DIS-IPS20C	2.0~174.0	2.0~200.0	—	0.20~20.00

## Dimensions

DIS-IP	ØA	B	C	ØD	ØE	ØF	Drive
DIS-IP5	40 (1.57")	40 (1.57")	5 (.20")	60 (2.36")	50 (1.97")	4.5 (.18")	6.35 (1/4")
DIS-IP50	50 (1.97")	63 (2.48")	10 (.39")	90 (3.54")	74 (2.91")	6.5 (.26")	9.5 (3/8")
DIS-IP200	60 (2.36")	72 (2.83")	15 (.59")	110 (4.33")	90 (3.54")	8.3 (.32")	12.7 (1/2")
DIS-IP500	80 (3.15")	99 (3.89")	15.5 (.61")	140 (5.51")	116 (4.57")	10.5 (.41")	19 (3/4")

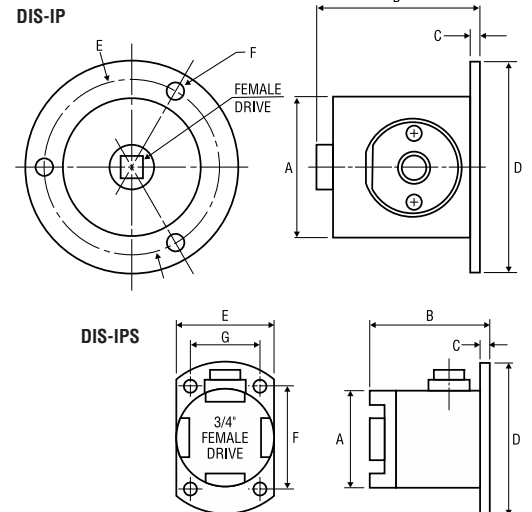
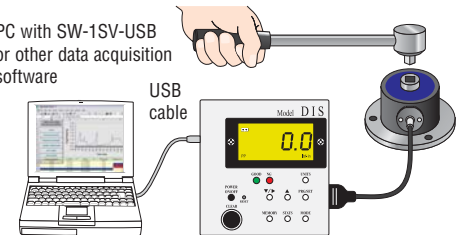
DIS-IPS	ØA	B	C	ØD	E	F	G
DIS-IPS05C	28 (1.10")	34.4 (1.35")	2.5 (.098")	44 (1.73")	28 (1.10")	30 (1.18")	20 (.78")
DIS-IPS5C	28 (1.10")	34.4 (1.35")	2.5 (.098")	44 (1.73")	28 (1.10")	30 (1.18")	20 (.78")
DIS-IPS20C	28 (1.10")	34 (1.33")	6 (.23")	49 (1.92")	28 (1.10")	35 (1.37")	20 (.78")

Specifications subject to change without notice.



DIS-IP remote sensor  
Test bracket is sold  
separately.

PC with SW-1SV-USB  
or other data acquisition  
software





**FORCE & TORQUE MEASUREMENT**  
ISO 9001 & ISO/IEC 17025 ACCREDITED

**IMADA®, Inc.**

3100 Dundee Rd., Suite 707, Northbrook, IL 60062  
Tel: 847-562-0834 Fax: 847-562-0839  
www.imada.com E-mail: imada@imada.com

# Impact & Continuous Drive Digital Torque Tester

**Verify Settings on Pneumatic, Electric, Pulse and Continuous Drive Torque Wrenches and Drivers**  
**Model: DI-1M**

- Easy to read LED panel displays torque and blows:
  - Torque value in lbf-ft, kgf-m and N-m (selectable)
  - Number of blows for selected period (0.1 - 9.9 sec)
- Peak, Real Time and Peak Down measuring mode (selectable)
- Both clockwise and counterclockwise operation
- Ergonomic Light Weight, yet heavy duty metal construction
- Accuracy:  $\pm 0.5\%$  F.S.  $\pm 1$  LSD (32° to 100°F)
- USB virtual COM port (peak data only)
- Runs on internal NiMH batteries (8 hour use)
- AC charger included

DI-1M fast response torque testers are designed for on-the-spot verification of air, electric, impact, pulse and continuous drive tools. The display indicates the peak value in either direction and the number of blows. Data can be downloaded to your computer via the USB port for further analysis with optional SW-1SV-USB data acquisition software.

Verify your own torque tools and save down time.

**DI-1M Ranges Accuracy:  $\pm 0.5\%$  F.S.  $\pm 1$  LSD**

Model	Capacity		
	lbf-in	kgf-cm	N-m
DI-1M-50	3.0~440.0	3.0~500.0	30~5000 (N-cm)
DI-1M-200A	30~1740	30~2000	3.0~200.0
	lbf-ft	kgf-m	N-m
DI-1M-200	3.0~145.0	0.30~20.00	3.0~200.0
DI-1M-500	3.0~362.0	0.30~50.00	3.0~500.0

## DI-1M Dimensions

	A	B	C	D	E	F	G
DI-1M-50	Ø50 (1.97")	63 (2.48")	10 (.39")	Ø90 (3.54")	Ø74 (2.91")	Ø6.3 (.25")	9.5 (3/8" Female Drive)
DI-1M-200	Ø60 (2.36")	79 (3.11")	15 (.59")	Ø110 (4.33")	Ø90 (3.54")	Ø8.3 (.35")	12.7 (1/2" Female Drive)
DI-1M-500	Ø80 (3.15")	99 (3.89")	15.5 (.61")	Ø140 (5.51")	Ø116 (4.57")	Ø10.5 (.41")	19 (3/4" Female Drive)

The torque readings displayed on torque testers may vary from the actual torque that a tool applies to a thread joint, because testers cannot always duplicate actual joint characteristics. Verify the torque output of the tool being used on the actual assembly, when critical assemblies are involved.

Specifications subject to change without notice.



Test bracket and Spring adapters are sold separately.

Optional SW-1SV-USB  
Data Acquisition Software



## SJ Spring Adapter Specifications

Model	Capacity	Drive	Screw	for Model
SJ-200	200 lbf-in	3/8"	3/8-16	DI-1M-50
SJ-300	300 lbf-in	3/8"	1/2-13	DI-1M-50
SJ-500	500 lbf-in	1/2"	1/2-13	DI-1M-200
SJ-1500	1500 lbf-in	1/2"	3/4-10	DI-1M-200
SJ-2000	2000 lbf-in	3/4"	3/4-10	DI-1M-500

