



Electronics



Mechanics



Software



Systems

ICV4030

CNC milling machine with maintenance-free EC servomotors for your specific application

NEW DESIGN!



Electronics



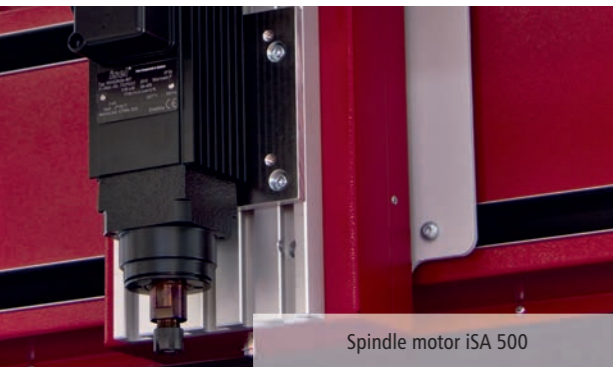
Mechanics



Software



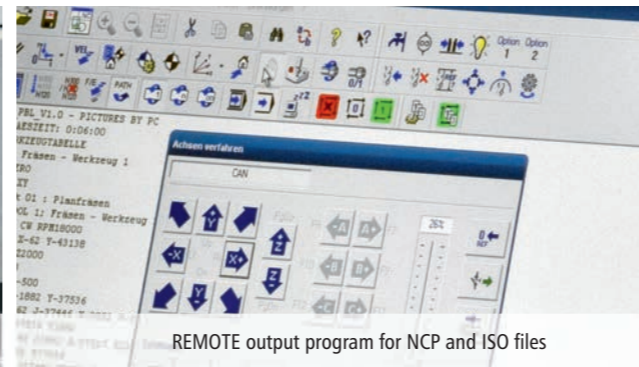
Systems



Spindle motor iSA 500



LAN connector for remote maintenance



REMOTE output program for NCP and ISO files



High quality stainless steel control elements



Effective, glare-free LED illumination

isel Germany AG

Bürgermeister-Ebert-Straße 40
D-36124 Eichenzell

Telefon: +49(0)6659/981-7 00
Telefax: +49(0)6659/981-7 76
E-Mail: automation@isel.com

www.isel.com/germany

From Components to Systems

isel®

ICV 4030

Our compact desktop machine in a completely new design

Our ready-to-use desktop machine ICV 4030 has been proven for years in practice and will be presented in a completely new design at the beginning of the year. The newly designed machine door with improved hood opening allows a longer travel range in the Z-axis, and therefore a higher passage. Due to the redesigned machine hood and the resulting greater access opening, a 4th axis can now be integrated easily.

Maintenance-free EC servo motors are used as drive, the reliable linear unit LES 5 is used in the X-axis. Furthermore, the universal control PC iPC 25 is installed. The central lubrication makes the machine overall more service-friendly. Also additional signal lamps were integrated.

With a base of just 770 x 836 mm, the machine can easily be operated while sitting in front of it. An isel workbench made of anodised aluminium profiles is the obvious choice as an „underframe“.

The economically priced CNC machine in modular chassis design, provides travel ranges of 400 x 300 x 140 mm.

A controller including control computer with WINDOWS® operating system and safety devices are built in at the back. An external monitor and a keyboard are required. All mechanical and electronic components are screwed together.

All linear axes in the machine are from the isel range and run on ground precision steel shafts with patented linear ball bearings. Ball-type linear drives installed with zero clearance are used as drives on the spindle pitch which is adapted to the application.

The machine table, made of surface-milled precision T-slot profiles, provides optimum clamping capabilities for most different workpiece holders and fixtures.

The four-axis control unit, integrated into the machine, comprehends all electronic modules of the CNC controller, a remote maintenance module provides user-friendly fault analysis as a special service.

Various machining units, clamping systems, measuring fixtures and accessories extend the basis machine to a complete system for most various applications and branches.

Design, production, sales and service of the CNC machines is provided by isel in Germany, authorised partners take care of sales and service abroad.



Basis machine for further applications

With the appropriate accessories the isel tabletop machine ICV 4030 is also suitable for:

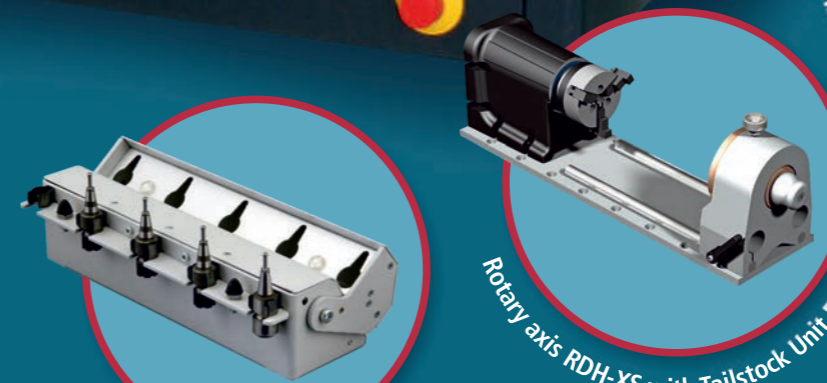
- Drilling
- Measuring
- Cutting
- Dispensing
- Glueing
- Casting
- Burring
- Polishing
- Testing
- Scanning
- Scaling
- Printing
- Placing
- Mounting
- Screwing
- etc...



Dust Exhaust



Spindle Motor iSA 500 with CoolMin Tool Cooling



Rotary axis RDH-XS with Tailstock Unit RE-XS



Fivefold Linear Changer for SK-T1

Travel range X / Y / Z (mm)	400 / 300 / 140
Table clamping size W x D (mm)	700 x 375
Passage (mm)	200
Dimensions W / D / H (mm)	769 / 836 / 901
Travel speed (mm/s)	200
Repeat accuracy (mm)	0,02
Drive motors	Servo motors
Guides	Linear units with precision steel shafts and ball recirculation carriage, play-free adjustable
Drive elements X / Y / Z	Ball screws 16x10 / 16x10 / 16x4 mm, play-free adjustable (optionally 16x4 mm in X/Y/Z)
Controller	CAN controller iMC with 3 drive control modules, integrated control computer, I/O module, safety circuit and standstill monitoring, power supply 48 V / 1,000W
Operation	Operation Function keys and emergency stop
Software	WinRemote (optionally: ProNC, CAD/CAM isy 2.8)
Weight (kg)	approx. 150 kg
Electrical supply data	230 V / 16 A

Further information about the CNC machine program of isel Germany AG is available at:

www.isel.com/germany