

REMAP BROCHURE

Providing fully programmable control of both linear and rotational motion with integrated force and torque sensing, making it an all-in-one actuator.



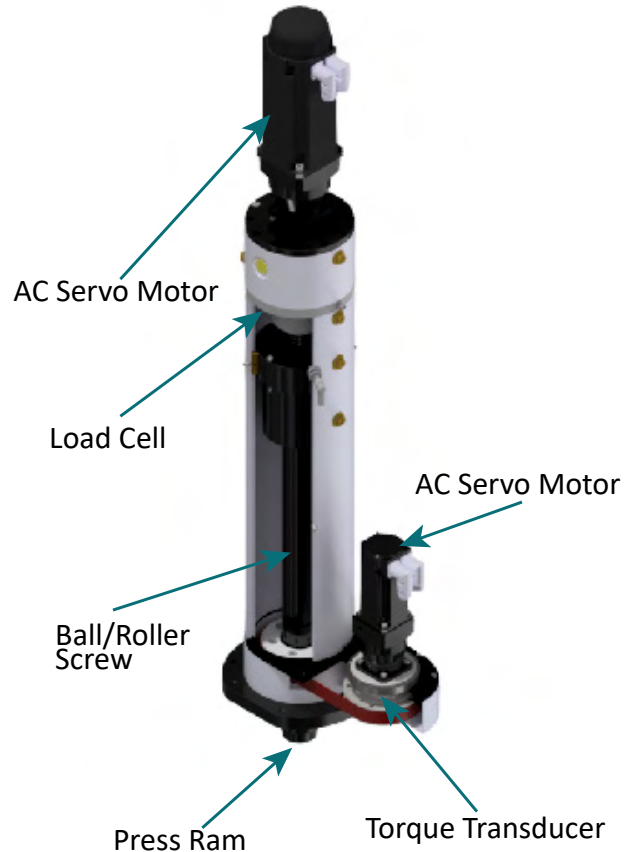
PROMESS

REMAP

As every application places different demands on assembly and test systems, Promess has designed a complete line of electro-mechanical rotating press systems to provide a solution for the most demanding applications.

FEATURES/CAPABILITIES:

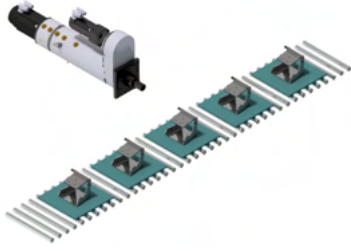
- + Press ram extends, retracts and rotates
- + Coordinated motion control
- + Programmable position, velocity, acceleration, angle, angular velocity, angular acceleration and relative and absolute limits
- + Press to position
- + Turn to angle
- + Press to force
- + Turn to torque
- + Promess' patented DABEX data analysis, any combination of torque, angle, position or force
- + Gauging of sensing data points such as force, torque, position and angle (single point, minimum, maximum and average) values
- + Adjustable process limits and tolerances



REMAP Sizes	Linear Axis		Rotational Axis	
	Force (kN)	Stroke (mm)	Torque (Nm)	Speed (RPM)
REMAP 1kN		100	20/50/100	250
REMAP 5kN		200	20/50/100/200	250
REMAP 12kN		400	20/50/100/200	250
REMAP 20kN		400	20/50/100/200	250
REMAP 30kN		400	20/50/100/200	250
REMAP 40kN		400	20/50/100/200	250
REMAP 60kN		400	20/50/100/200	250



SAMPLE APPLICATIONS



FUNCTIONAL TORQUE TEST:

- + Breakaway torque testing
- + Torque to turn testing
- + Efficiency testing
- + Self actuating effort testing



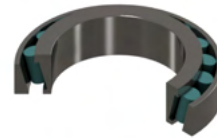
ASSEMBLE TO TORQUE:

- + Extend ram to part
- + Verify thread alignment to prevent damage
- + Apply programmable torque
- + Gauge torque and position



BEARING LASH ADJUSTMENT:

- + Apply initial torque to nut
- + Push and pull shaft to programmable force while measuring lash
- + Adjust nut torque to achieve desired bearing lash
- + Gauge lash
- + Gauge torque and angle



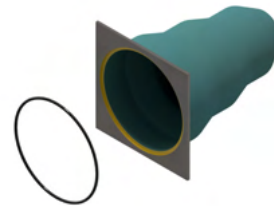
BEARING PRE-LOAD:

- + Apply programmable force to bearing
- + Rotate bearing at programmable speed
- + Monitor & gauge drag torque of bearing
- + Gauge force and position
- + Gauge torque and angle



SPLINE ALIGNMENT + PRESS:

- + Apply programmable force to determine alignment
- + Rotate to align as needed
- + Monitor spline slip force to ensure alignment
- + Press to force or position
- + Gauge force and position



SEAL PRESSING:

- + Rotate seal while applying a programmable force
- + Monitor insertion force to ensure seal is installed without damage
- + Gauge force and position
- + Gauge torque and angle

WORK STATION

The Promess Work Station is a stand-alone system featuring a Promess motion controller and either a Promess Electro-Mechanical Assembly Press (EMAP), a TorquePRO motorized torque system or a Rotational Electro-Mechanical Assembly Press (REMAP), depending on application requirements. The Work Station provides a flexible foundation for use in assembly, test and lab applications.

Electric Press Work Station Includes:

- + Promess servo press with integrated force and position feedback
- + Promess motion controller
- + Press stand with C-frame or 4-post frame
- + Light curtain for operator safety
- + Programming software



PROCESS DEVELOPMENT CENTER



Promess would like to invite you to our Process Development Center. The PDC is available to help you develop your processes and confirm the Promess technology that is best suited for your application. In addition to in-person process development, you are also encouraged to send in your parts to be proved out by our expert Application Engineers.



11429 Grand River Road, Brighton, MI 48116 | 810-229-9334 | promessinc.com | promess@promessinc.com
Copyright © Promess Incorporated All Rights Reserved